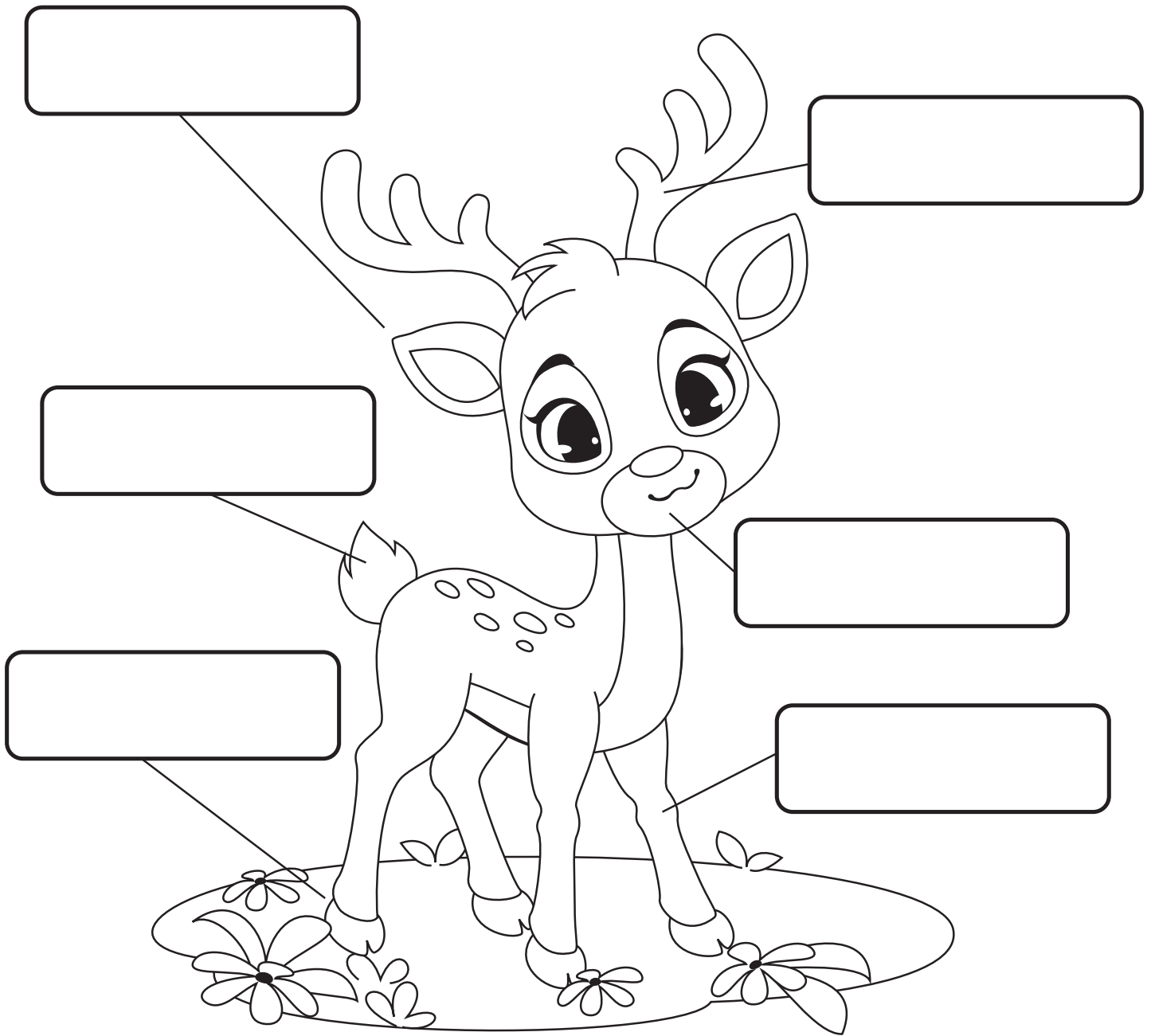


# Parts of a Reindeer



HOOF

TAIL

ANTLER

EAR

MOUTH

LEG

# Facts about Reindeer

Reindeer are large mammals that can be found in the tundra regions of North America, Europe, Asia, and Greenland. Both male and female reindeer can have antlers, but males usually have larger ones. Sometimes called caribou (CARE-i-boo), they vary in color and size.

Both male and female reindeer grow antlers, while in most other deer species, only the males have antlers. Compared to their body size, reindeer have the largest and heaviest antlers of all living deer species. A male's antlers can be up to 51 inches long, and a female's antlers can reach 20 inches.



Label the following statements from the passage above as fact or opinion.

1. They vary in color and size. \_\_\_\_\_
2. Americans enjoy the legend of the flying reindeer. \_\_\_\_\_
3. Both male and female reindeer can have antlers. \_\_\_\_\_

4. Write another fact from the passage.

---

---

5. Write another opinion from the passage.

---

---

6. How did you conclude it is an opinion? (See Number 5.)

---

---

# Reindeer Anatomy

Bulls have larger antlers than cows

Coat is thin and brown in summer, thick and gray in winter

White tail

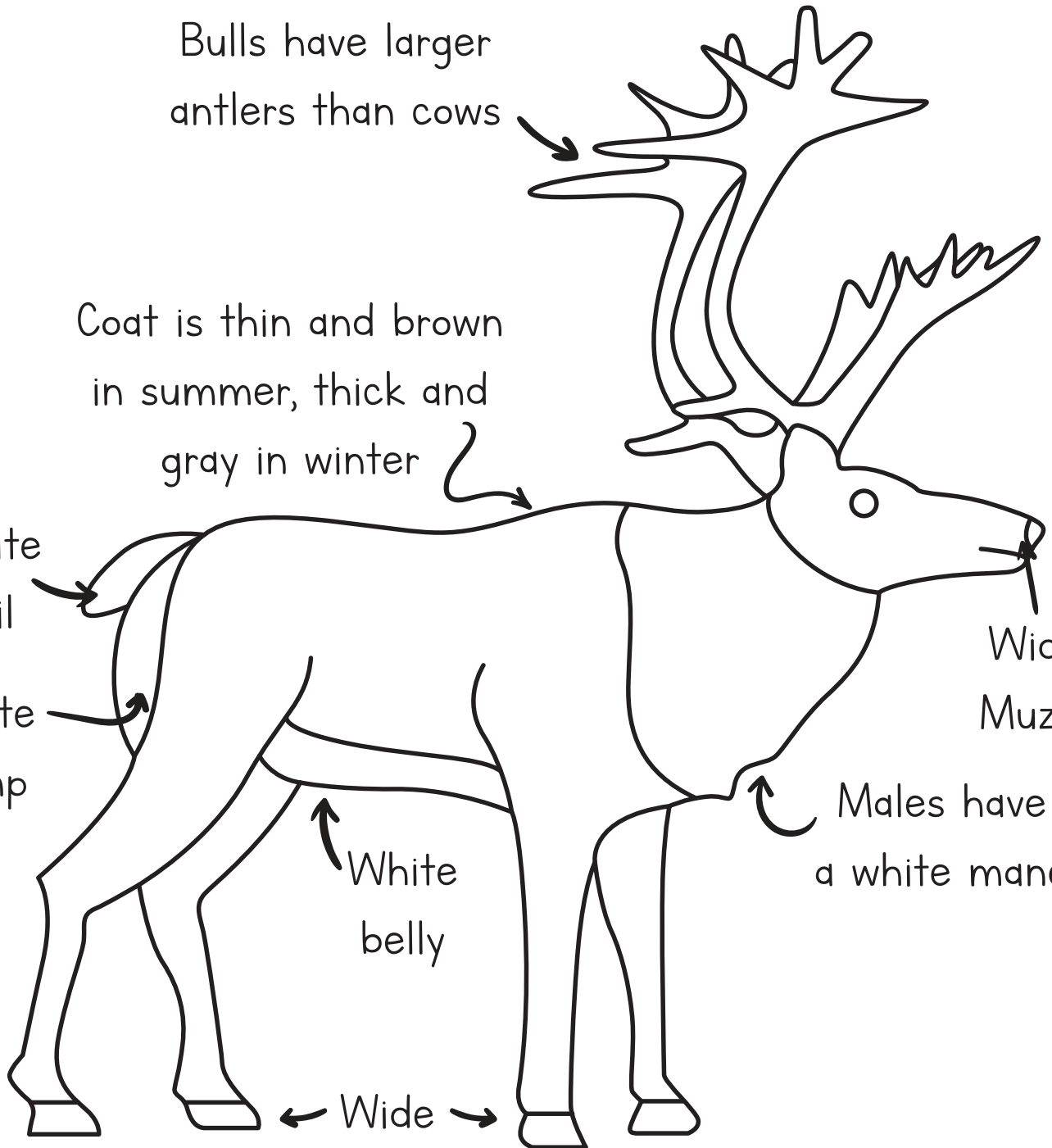
White rump

White belly

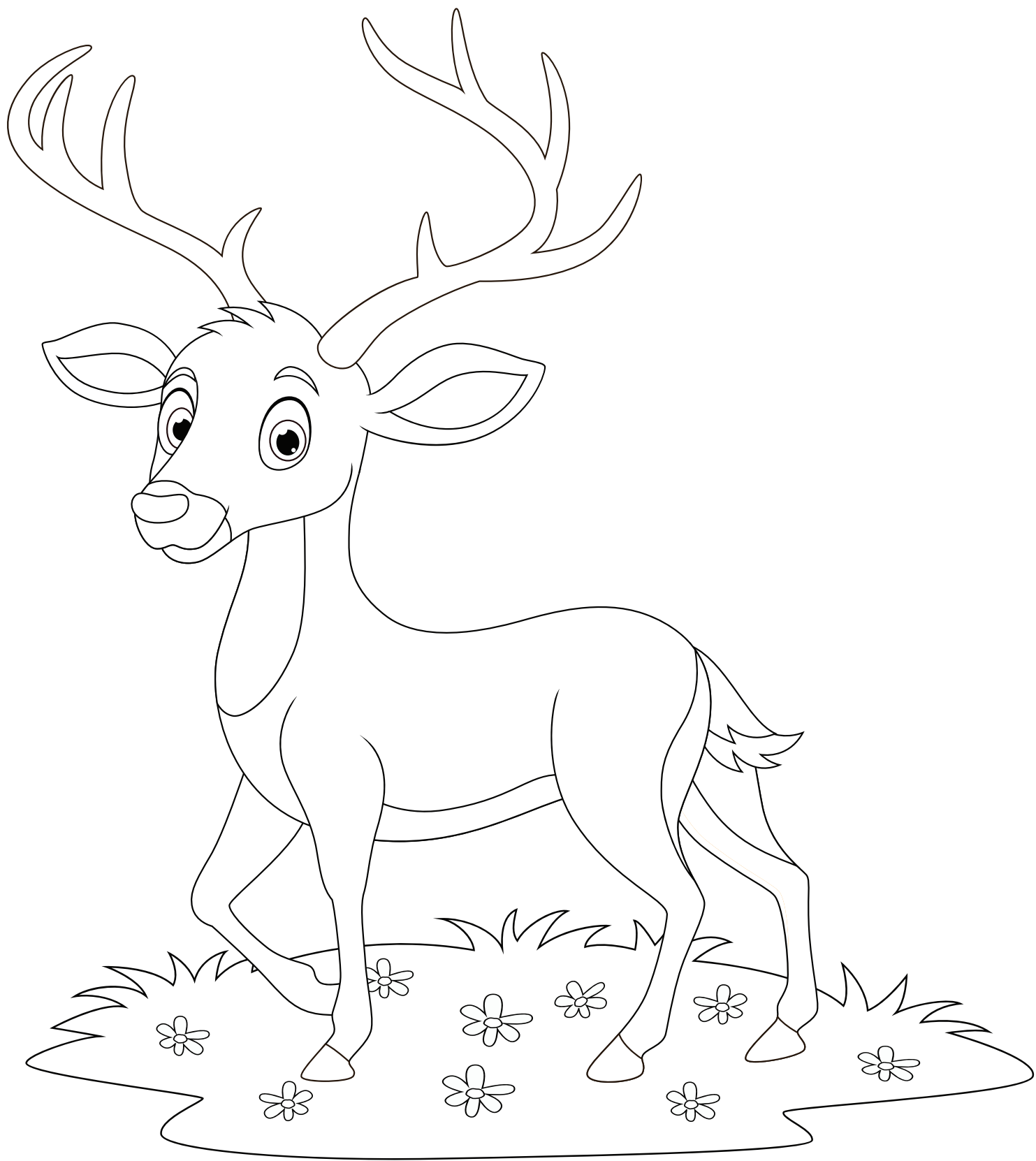
Wide feet with hooves

Wide Muzzle

Males have a white mane



# Reindeer coloring Page



# Reindeer Word Search

A H W I N T E R I V W  
K E B N A W T A I L H  
K D U R K N C E Z N I  
Y R H L O E T F Y O T  
M O U T H W H L T S E  
H T S N D W N Q E E J  
Y R N L L E G Q E R B  
H O O F H C Y F U R S  
T C W R E I N D E E R

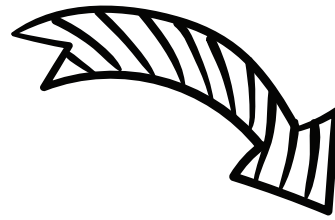


Find and circle the words listed below.

HOOF	EAR	REINDEER
TAIL	LEG	SNOW
MOUTH	WINTER	COLD
FUR	WHITE	NOSE
ANTLERS	BROWN	ICE



**Fawn**  
/CALF



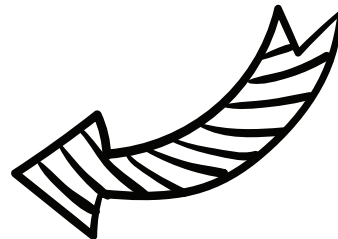
**Yearling**  
/YOUNG REINDEER



# Reindeer

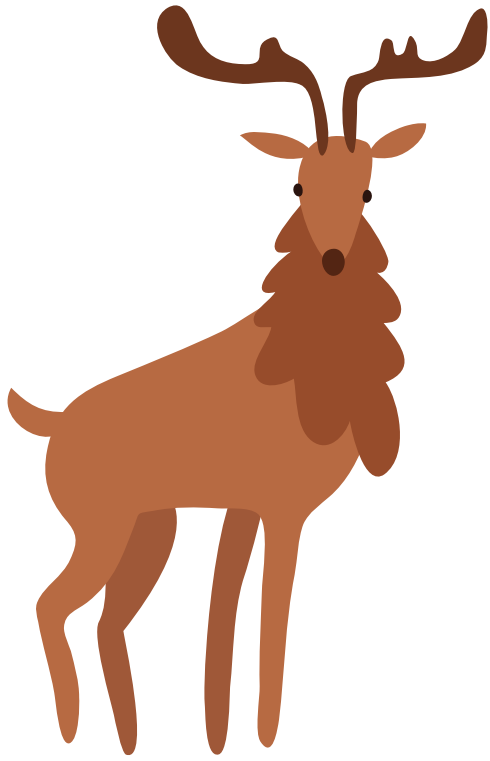
## LIFE CYCLE

**Adult**  
/BULL OR COW



Adult Male: **Bucks / Bull**

Adult Female: **Doe / Cow**



# MEET MY REINDEER

I named it.

\_\_\_\_\_

My reindeer rocks because

\_\_\_\_\_

\_\_\_\_\_

\_\_\_\_\_

\_\_\_\_\_

\_\_\_\_\_

\_\_\_\_\_

\_\_\_\_\_

\_\_\_\_\_

\_\_\_\_\_

Tricks it can do.



It has this special magical  
power.

\_\_\_\_\_